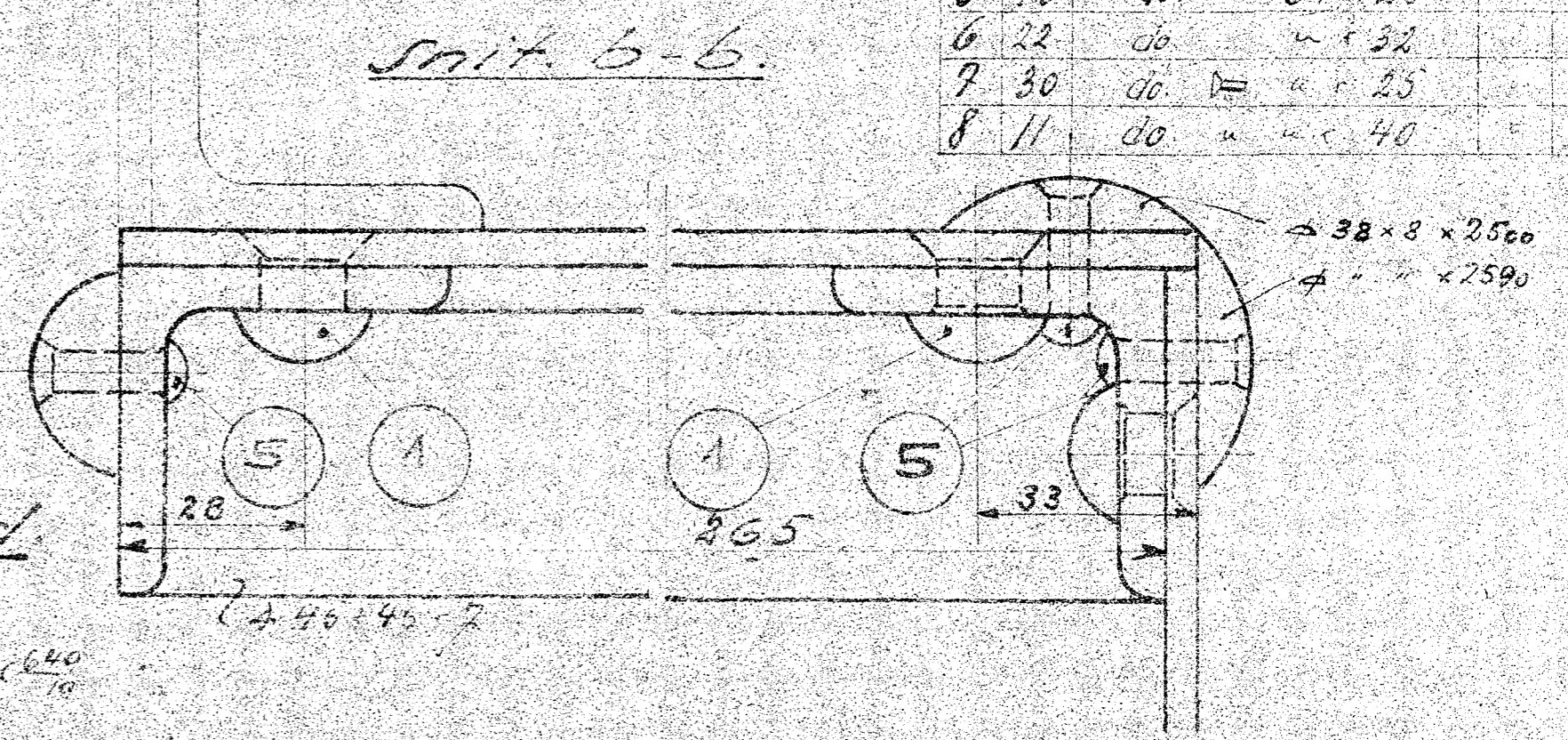
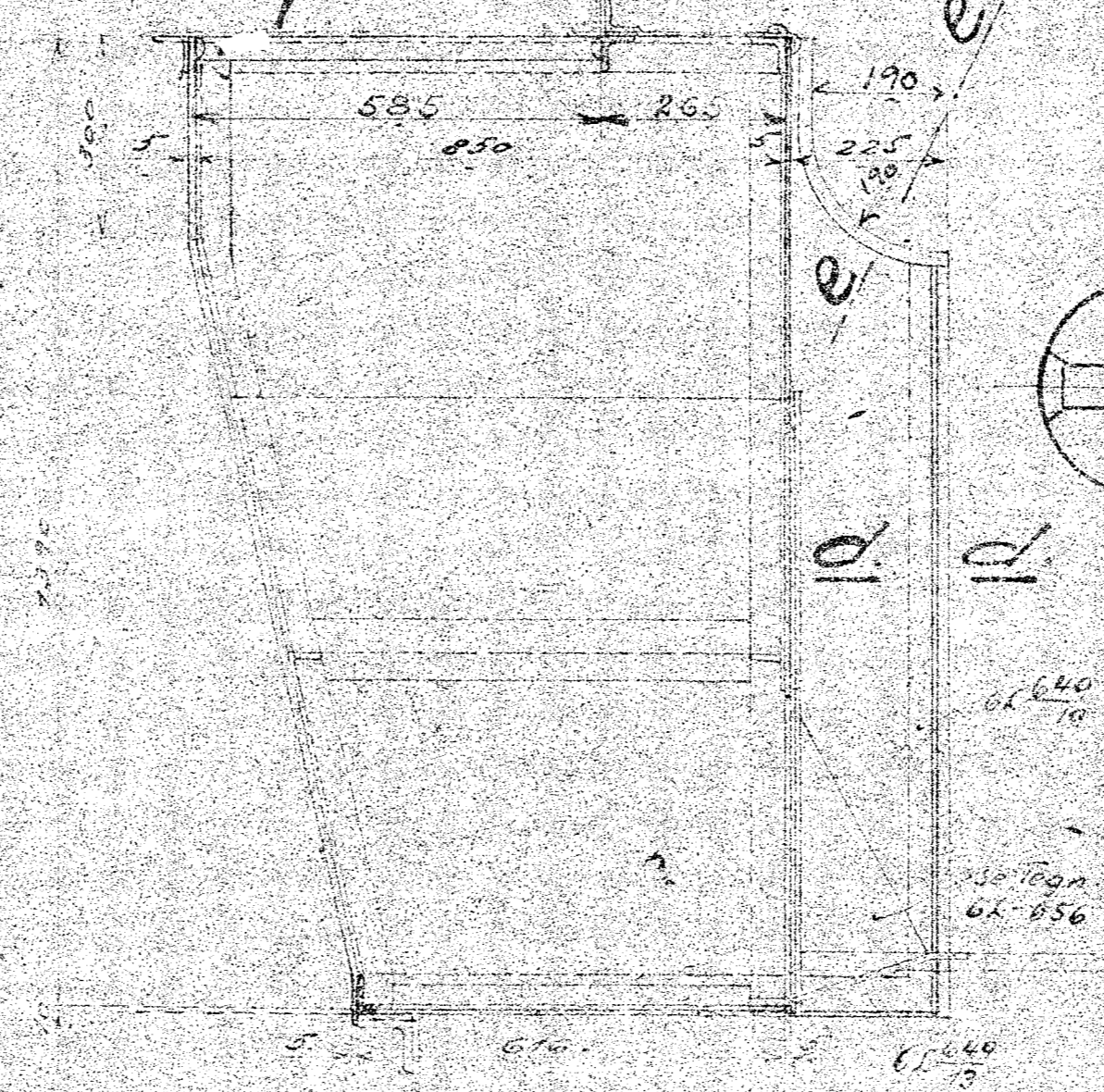
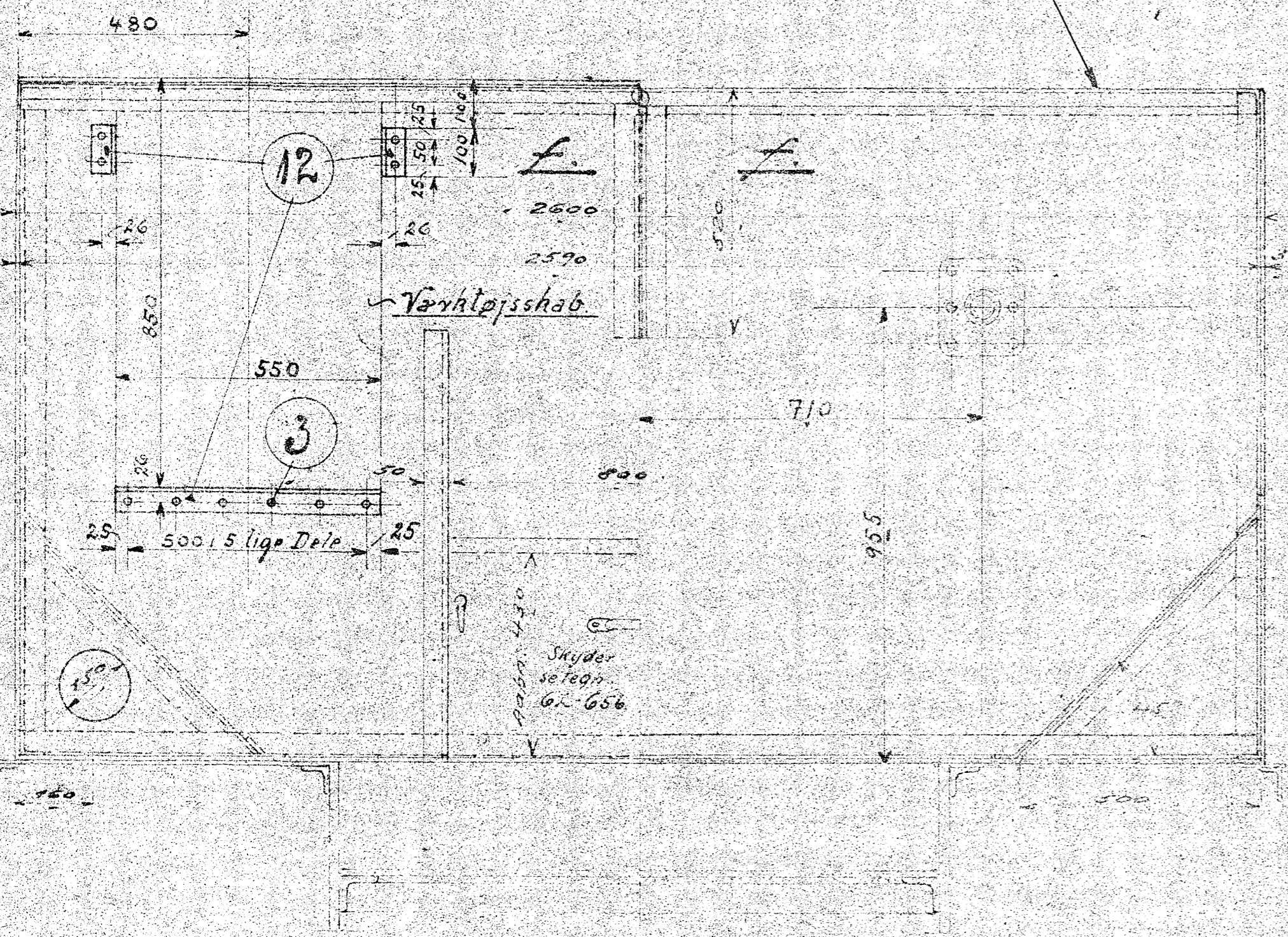


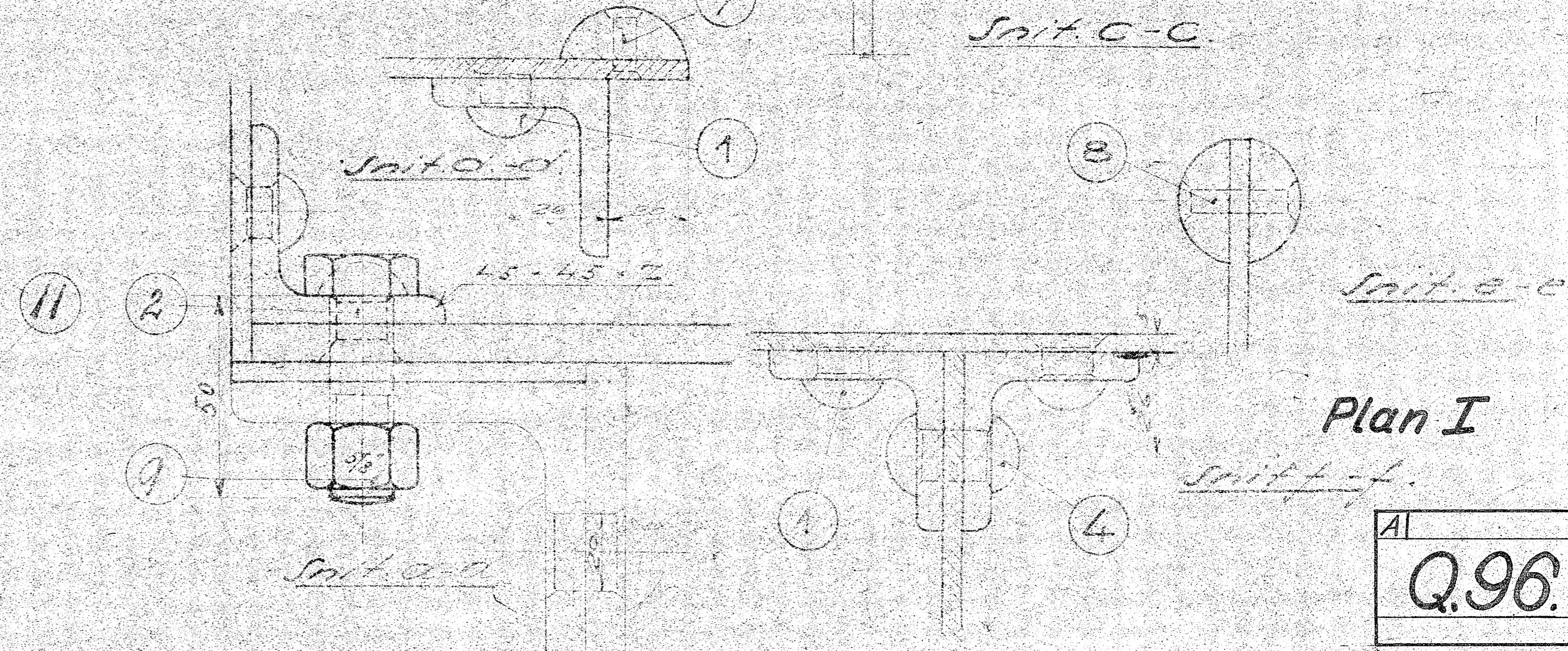
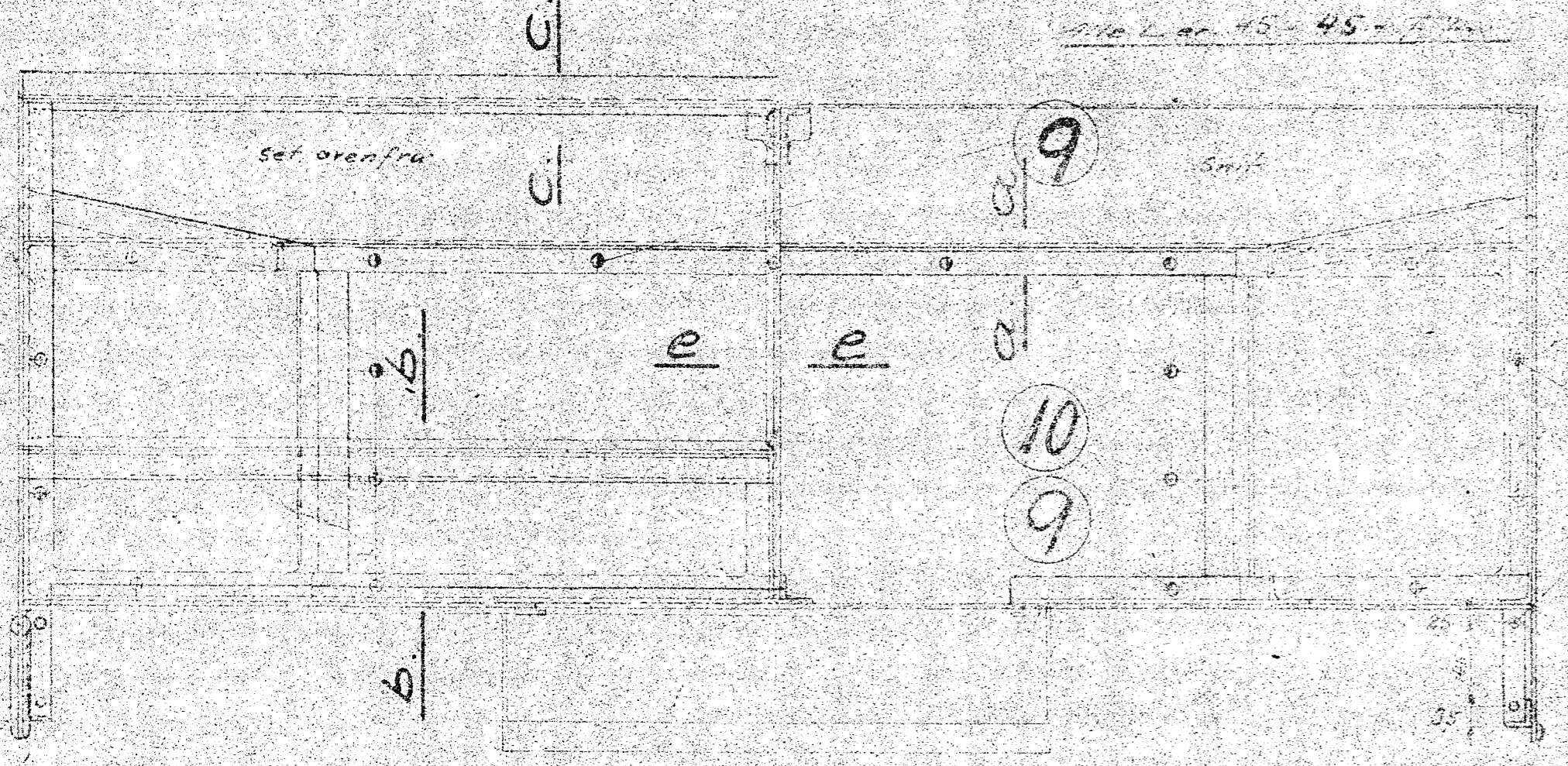
For forhøjet kulkasse, se tegn. Q II 16.420.

For førerhus bagvæg, se tegn. Q 86, plan II.

1	270	Nagler	13 + 22	Nitr. jern
2	70	do	u + 30	"
3	126	do	u + 32	"
4	13	do	u + 40	"
5	70	do	6 + 28	"
6	22	do	u + 32	"
7	30	do	u + 25	"
8	11	do	u + 40	"



9	9	Bolt	se tegn. 6x 147	5/8"	42445	10x 8-9
10	4	do	"	"	"	20 21
11	10	do	"	"	"	"
12	3	Trinkel	25x 100x 4	550	Flang	45 46 47
13	5	Bræddbolt	3/8 x 35	"	"	1149



Plan I

Q.96.

Foreningsring	Kulkasselemme	12-12-34	K.F.P.
	Hensvisn. om kulkasse indfort.		
	M. Nr. 384-55, M. 21/55	2-2-55	DANMARK ES.

Kun 3400 277

Kulkasse
D Jønderløk Dita Q
H.N. 616
15. 10. 1955 6 6 640